


Bildsoft SecureDNA 2007 User Manual



Home

SecureDNA offers you a lot of features to protect your precious data.

The SecureDNA Home shows you all the program's functions.

Just click on  for showing the complete screenshot of features.

Just click on the icons in the Home and some panels will immediately appears on the left or on the right.

These panels allows you to do everything you want, just follow the instructions.





File manager

SecureDNA's file manager shows you all the protected files and folders.

To protect a folder or a file click on New .

You can deprotect selected files or folders by clicking on Deprotect selected item .

Data will be saved if you click on Save Data .

With Refresh items you can refresh the list of all the files of the manager.

If you click on Close you will return to SecureDNA Home.


Use and to move between the items of the file manager.

The screenshot shows the File Manager interface with the following details:

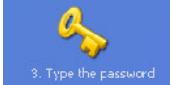
- Window title: File Manager: listing of all protected files and folders
- Navigation bar: Home, File Manager, Move first, Move previous, 1 of 3, Move next, Move last, New, Deprotect selected item, Save Data, Refresh items, Close.
- Search and Filter: Quick search: Filter by name
- Table of files and folders:


ID	Name	Directory	Size	Extension	Type	Notes	Created
▶ 19	1CRIT.jpg	C:\Documents and Settings\PC\Desktop\1CRIT.j...	49,3125 Kb	.jpg	File		giovedì 1 febbrai...
20	1CRIT.jpg	C:\Documents and Settings\PC\Desktop\1CRIT.j...	49,3125 Kb	.jpg	File		giovedì 1 febbrai...
21	AutoExpo Cript	C:\Documents and Settings\PC\Desktop\AutoExp...	ND	.mscc	Folder		venerdì 2 febbra...
*							

Procedure to protect in file manager (New)

Choose the file you have to protect, click on CHOOSE THE FILE  in the menu on the right and choose the file or the folder you have to protect.

Click on CHOOSE THE DESTINATION  and choose the directory where the protected file will be send.

Click on TYPE THE PASSWORD  and type the password two times. The program will use the password to protect the file, don't forget it!

You have just to click on the GREEN BUTTON  to start the protection.

A new window will be showed. You can see there or the details of the encryption; when it finishes, click on OK and you could see the file in the file manager.



Protect a CD

With this function you can burn data on CDs protected with a password. Select the drive where the CD you have to burn is, the speed of the drive, and give a name to the CD.

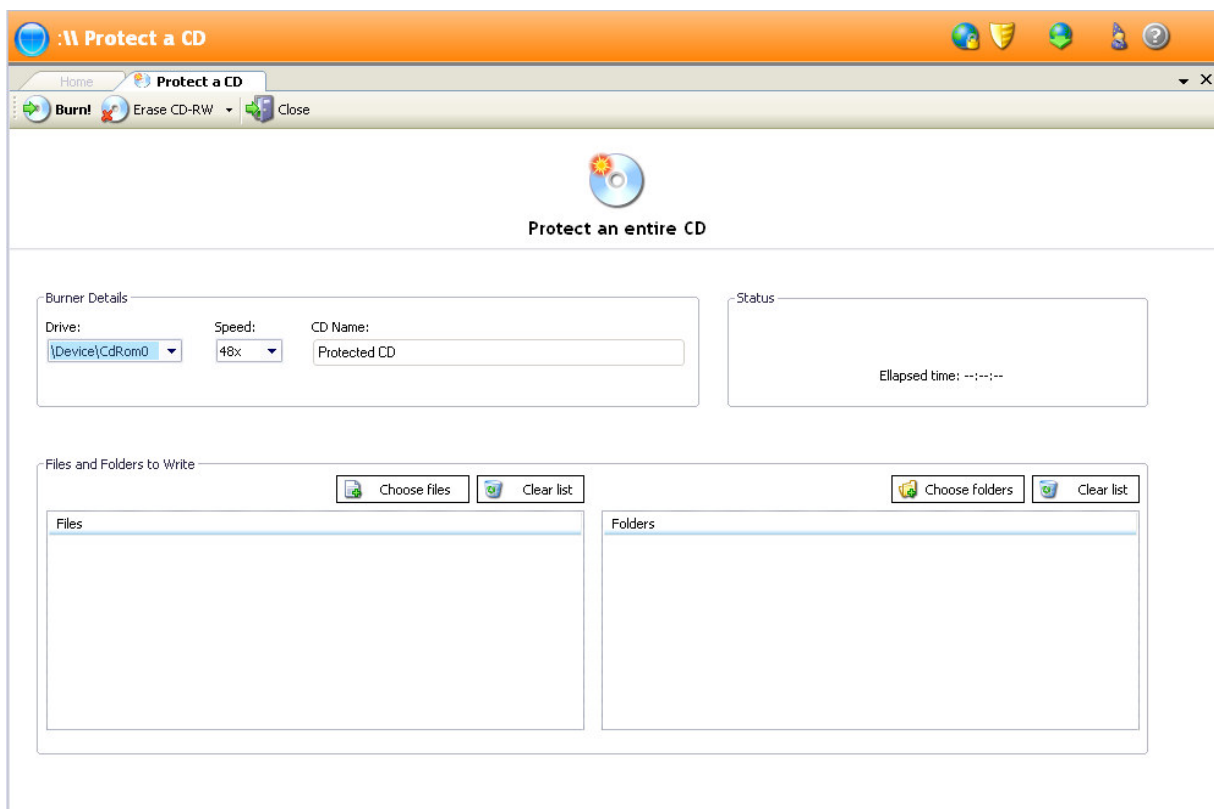
After that, click on Choose files or Choose folders for adding files or folders to the burning list.

Click on Clear list for deleting the burning list.

Start the burning clicking on Burn!.

If you have to erase CD-RW, click on Erase CD-RW, choosing you want do it quickly or completely.


If you click on Close, you return to SecureDNA's home.






Private preferred websites

With this function you can create a list of preferred websites and protect it with a password.




At the beginning you have to type a password two times. Then click on OK or click on the symbol with the  to save the password in a USB drive (the drive will remind you the word, you can forget it!).


Now, for adding a new link, click on .

For deleting the selected link, click on .

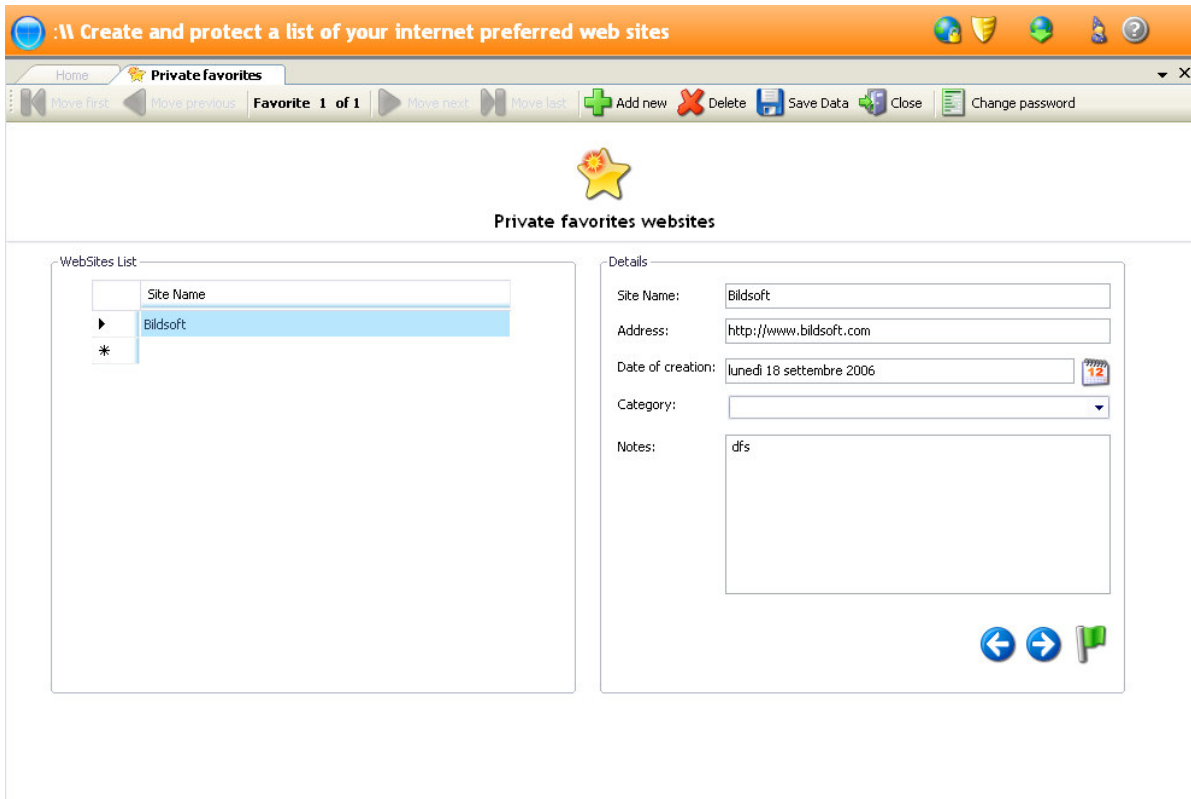
Click on  to save all the data you typed.

Click on  for returning to SECUREDNA's home.

You can change the password clicking on . Type your password and click on  , then write the new one and click on  another time. Selecting the links, you can write all you want(characteristics, notes...).

With the  button the site will be start in your browser.

Move between the links with  .







Protect an entire memory stick

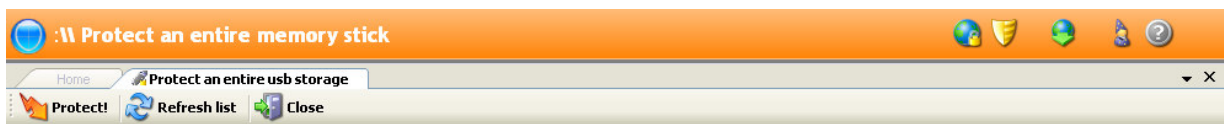
With this function you can protect with a password your USB drives.

Select the memory stick you have to protect.

You have only to type the password you have decided two times (for a safer protecting process) and click on .

With  Refresh list you can refresh the list of all drives in your computer.

If you click on , you return to SECUREDNA's home.




Protect an entire usb storage



Select item

Type the password:

Retype the password:



Real-Time Operation Control Panel



Elapsed time: --:--:--

Smart Report



Delete securely a file or a folder

You didn't delete a file safer like now!

Click on DELETE A FILE or DELETE A FOLDER and then click CHOOSE THE

FILE



1. Choose the file

or CHOOSE THE FOLDER



2. Choose the destination

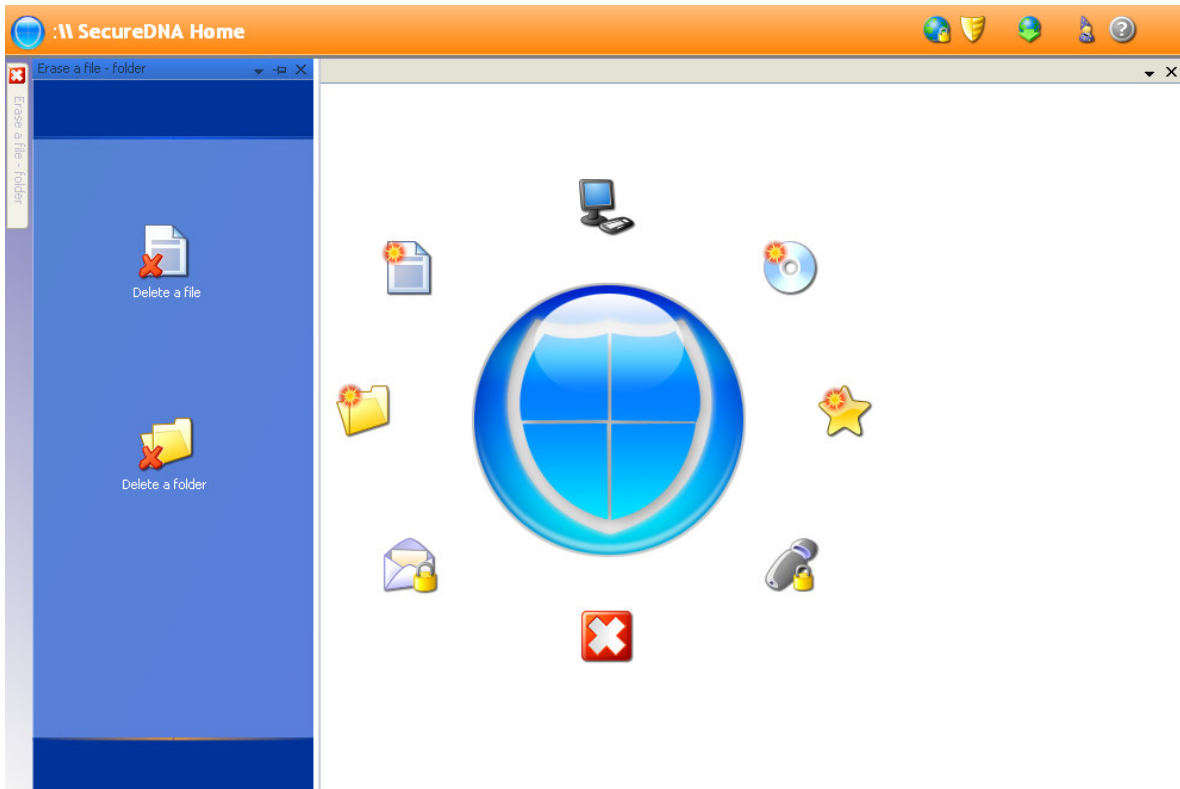
on the right.

Now you have only to choose the file you want to delete and click on the

GREEN BUTTON




4. When ready, click the image over here











Send a protect e-mail


With this function you will send safer e-mails to everybody you want. Just typing the e-mail to an another pc(with SecureDNA installed)...

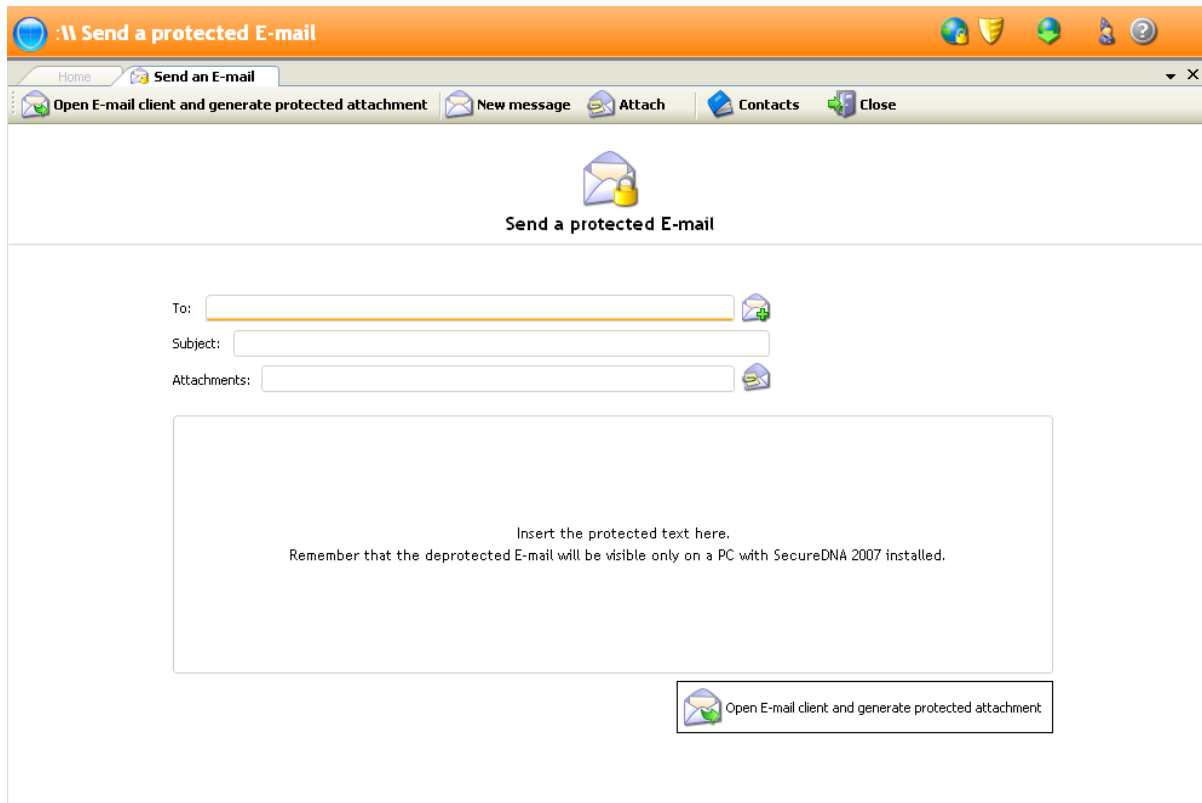
Click on  **Open E-mail client and generate protected attachment** to generate a protected file (containing the encrypted text and files) which you'll attach to the e-mail.

Click on  **New message** to start writing a new letter.

Click on  **Attach** to send a file with the e-mail (you have only to choose the file).

Click on  **Contacts** to open your personal list of contacts. (click on  **Add new** to add a contact, click on  **Delete** to delete a contact, click on  **Save Data** to save the data, click on  **Close** to exit).

If you click on  **Close**, you'll return to SecureDNA home.




To:

Subject:

Attachments:

Insert the protected text here.
Remember that the deprotected E-mail will be visible only on a PC with SecureDNA 2007 installed.

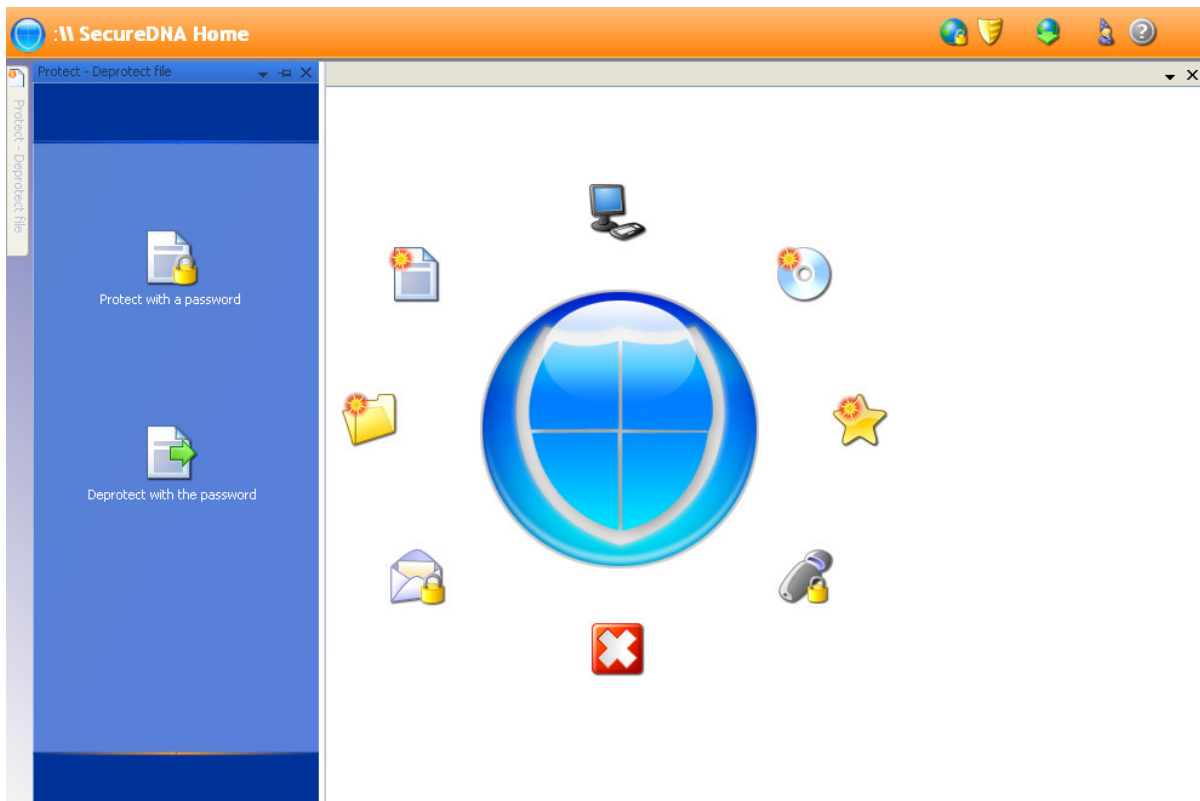
 Open E-mail client and generate protected attachment



Protect or deprotect any kind of file or Protect folders

Click on the icon in the home page for protecting files or folders simply. Click on PROTECT WITH A PASSWORD or DEPROTECT WITH THE PASSWORD for protect or deprotect a file/folder.

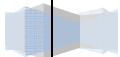
Now on the right a menu will be showed. You have only to choose the file/folder, the destination and type the password (read **Procedure to protect in file manager** for more information).




Fast drag'n'drop

The easiest way to protect a file or a folder with SecureDNA is dragging and dropping it on the home page.

Then you have only to choose the item's destination and the password.



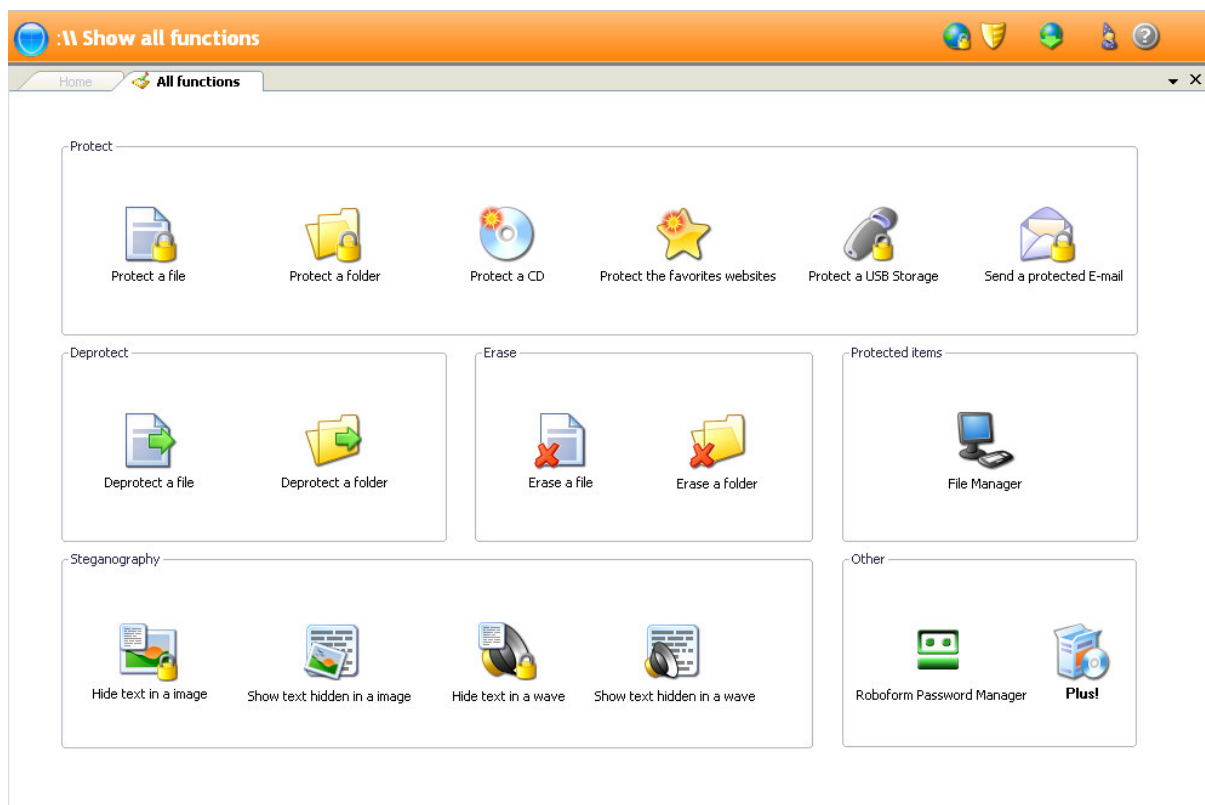
All functions window

Clicking on the  in the home page you open the ALL FUNTIONS' WIEW. There are some functions you can do with wizard view too, but there's more!






In this functions you have only to click on  **Select image** or  **Select Wave** and type the text you want.

Click on  to start the operation.



On the SecureDNA's Top...



With these buttons  , you can try and buy Bildsoft Safest 2006 and Bildsoft Cypter 2006, or update SecureDNA to the latest version .

You can also open this manual , ask for technical support or report a bug , open the quick help panel  or the plus! window .

www.bildsoft.com

